

# SEDLÁŘSKÉ KOVÁNÍ . SADDLERY ACCESSORIES .

# W

z a p í n á m e c e l ý s v ě t

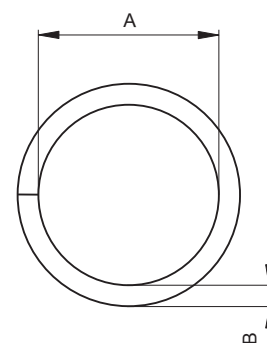


## WM SEDLÁŘSKÉ KROUŽKY • SADDLERY RINGS

Art. Velikost / Size A (mm) B (mm) • Materiál / Material ► ocel / steel

### NESVAŘOVANÉ • NON - WELDED

<b>WM 42 310 00</b>	1204/ 11,5	∅ 11,5	∅ 2,5
<b>WM 42 316 00</b>	1204/ 25	∅ 25	∅ 2
<b>WM 42 319 00</b>	1204/ 28	∅ 28	∅ 2,8
<b>WM 42 320 00</b>	1204/ 9	∅ 9	∅ 1,6
<b>WM 42 321 00</b>	1204/ 10	∅ 10	∅ 1,6
<b>WM 42 322 00</b>	1204/ 12	∅ 12	∅ 2
<b>WM 42 323 00</b>	1204/ 14	∅ 14	∅ 2,5
<b>WM 42 325 00</b>	1204/ 16	∅ 16	∅ 2,5
<b>WM 42 326 00</b>	1204/ 18	∅ 18	∅ 2,8
<b>WM 42 327 00</b>	1204/ 20	∅ 20	∅ 3,15
<b>WM 42 328 00</b>	1204/ 21	∅ 21	∅ 3,15
<b>WM 42 329 00</b>	1204/ 23	∅ 23	∅ 3,15
<b>WM 42 330 00</b>	1204/ 25	∅ 25	∅ 3,55
<b>WM 42 331 00</b>	1204/ 28	∅ 28	∅ 3,55
<b>WM 42 332 00</b>	1204/ 30	∅ 30	∅ 4
<b>WM 42 333 00</b>	1204/ 32	∅ 32	∅ 4,5
<b>WM 42 334 00</b>	1204/ 35	∅ 35	∅ 5
<b>WM 42 335 00</b>	1204/ 40	∅ 40	∅ 5,6
<b>WM 42 336 00</b>	1204/ 45	∅ 45	∅ 5,6
<b>WM 42 337 00</b>	1204/ 50	∅ 50	∅ 6
<b>WM 42 339 00</b>	1204/ 40	∅ 40	∅ 4



### SVAŘOVANÉ • WELDED

<b>WM 42 310 01</b>	1204/ 11,5	∅ 11,5	∅ 2,5
<b>WM 42 316 01</b>	1204/ 25	∅ 25	∅ 2
<b>WM 42 319 01</b>	1204/ 28	∅ 28	∅ 2,8
<b>WM 42 320 01</b>	1204/ 9	∅ 9	∅ 1,6
<b>WM 42 321 01</b>	1204/ 10	∅ 10	∅ 1,6
<b>WM 42 322 01</b>	1204/ 12	∅ 12	∅ 2
<b>WM 42 323 01</b>	1204/ 14	∅ 14	∅ 2,5
<b>WM 42 325 01</b>	1204/ 16	∅ 16	∅ 2,5
<b>WM 42 326 01</b>	1204/ 18	∅ 18	∅ 2,8
<b>WM 42 327 01</b>	1204/ 20	∅ 20	∅ 3,15
<b>WM 42 328 01</b>	1204/ 21	∅ 21	∅ 3,15
<b>WM 42 329 01</b>	1204/ 23	∅ 23	∅ 3,15
<b>WM 42 330 01</b>	1204/ 25	∅ 25	∅ 3,55
<b>WM 42 331 01</b>	1204/ 28	∅ 28	∅ 3,55
<b>WM 42 332 01</b>	1204/ 30	∅ 30	∅ 4
<b>WM 42 333 01</b>	1204/ 32	∅ 32	∅ 4,5
<b>WM 42 334 01</b>	1204/ 35	∅ 35	∅ 5
<b>WM 42 335 01</b>	1204/ 40	∅ 40	∅ 5,6
<b>WM 42 336 01</b>	1204/ 45	∅ 45	∅ 5,6
<b>WM 42 337 01</b>	1204/ 50	∅ 50	∅ 6
<b>WM 42 339 01</b>	1204/ 40	∅ 40	∅ 4

### SVAŘOVANÉ PLAMENEM • FLAME WELDED

<b>WM 42 336 02</b>	1204/ 45	∅ 45	∅ 5,6
---------------------	----------	------	-------

# SEDLÁŘSKÉ KOVÁNÍ . SADDLERY ACCESSORIES .

# W

z a p í n á m e c e l ý s v ě t

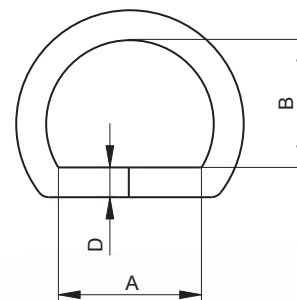


## WM SEDLÁŘSKÉ POLOKROUŽKY • SADDLERY D-RINGS

Art. Velikost / Size A (mm) B (mm) D (mm) • Materiál / Material ► ocel / steel

### NESVAŘOVANÉ • NON - WELDED

WM 42 399 00	4487/ 8	8	7,5	∅ 1,8
WM 42 400 00	4487/ 10	10	8,5	∅ 1,8
WM 42 401 00	4487/ 12	12	10,5	∅ 2,5
WM 42 402 00	4487/ 14	14	12	∅ 2,5
WM 42 403 00	4487/ 16	16	13,5	∅ 2,8
WM 42 418 00	4487/ 16	16	13,5	∅ 2
WM 42 404 00	4487/ 18	18	15	∅ 2,8
WM 42 405 00	4487/ 20	20	17	∅ 2,8
WM 42 406 00	4487/ 22	22	18	∅ 3,15
WM 42 407 00	4487/ 24	24	20	∅ 3,15
WM 42 408 00	4487/ 26	26	22	∅ 3,55
WM 42 409 00	4487/ 28	28	24	∅ 3,55
WM 42 410 00	4487/ 30	30	26	∅ 4
WM 42 411 00	4487/ 32	32	28	∅ 4
WM 42 412 00	4487/ 35	35	30	∅ 5
WM 42 413 00	4487/ 40	40	34	∅ 5,6
WM 42 415 00	4487/ 45	45	38	∅ 5,6
WM 42 463 00	4487/ 8	8	8	∅ 1,6
WM 42 464 00	4487/ 10	10	10	∅ 1,8
WM 42 466 00	4487/ 12	12	12	∅ 2,24
WM 42 469 00	4487/ 14	14	14	∅ 2,5
WM 42 472 00	4487/ 16	16	16	∅ 2,8
WM 42 475 00	4487/ 18	18	18	∅ 3



### SVAŘOVANÉ • WELDED

WM 42 399 01	4487/ 8	8	7,5	∅ 1,8
WM 42 400 01	4487/ 10	10	8,5	∅ 1,8
WM 42 401 01	4487/ 12	12	10,5	∅ 2,5
WM 42 402 01	4487/ 14	14	12	∅ 2,5
WM 42 403 01	4487/ 16	16	13,5	∅ 2,8
WM 42 418 01	4487/ 16	16	13,5	∅ 2
WM 42 404 01	4487/ 18	18	15	∅ 2,8
WM 42 405 01	4487/ 20	20	17	∅ 2,8
WM 42 406 01	4487/ 22	22	18	∅ 3,15
WM 42 407 01	4487/ 24	24	20	∅ 3,15
WM 42 408 01	4487/ 26	26	22	∅ 3,55
WM 42 409 01	4487/ 28	28	24	∅ 3,55
WM 42 410 01	4487/ 30	30	26	∅ 4
WM 42 411 01	4487/ 32	32	28	∅ 4
WM 42 412 01	4487/ 35	35	30	∅ 5
WM 42 413 01	4487/ 40	40	34	∅ 5,6
WM 42 415 01	4487/ 45	45	38	∅ 5,6
WM 42 463 01	4487/ 8	8	8	∅ 1,6
WM 42 464 01	4487/ 10	10	10	∅ 1,8
WM 42 466 01	4487/ 12	12	12	∅ 2,24
WM 42 469 01	4487/ 14	14	14	∅ 2,5
WM 42 472 01	4487/ 16	16	16	∅ 2,8
WM 42 475 01	4487/ 18	18	18	∅ 3



z a p í n á m e c e l ý s v ě t



40 NÝTY TAŽENÉ • DRAWNED RIVETS

Art.	d (d <sub>1</sub> ) / V / D (mm)
<b>S POVLAKEM • WITH COATING</b>	
40A0360060	3,6/6,0/7,0
40A0360075	3,6x7,5x7,0
40A0380050	3,8/5,0/6,0
40A0380060	3,8/6,0/6,0
40A0390074	3,0(3,9)/7,4/6,0



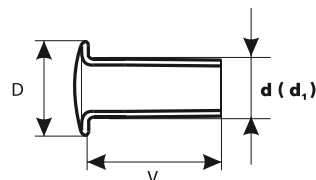
• Materiál / Material ▶ ocel / steel

STANDARDNÍ POVRCHOVÁ ÚPRAVA  
nikl, černý nikl, zinek, mosaz

STANDARDNÍ BALENÍ  
sypané: 5000, 15000 ks

STANDARD SURFACE FINISH  
nickel, black nickel, zinc, brass

STANDARD PACKING  
loose: 5000, 15000 ks



41 NÝTY TAŽENÉ • DRAWNED RIVETS

Art.	d / V / D (mm)
<b>DVOUDÍLNÉ • DOUBLE</b>	
WM2000800	3,8/7,5/11,5 3,6/11,5/11
WM2000300	3,0/4,4/7,0 2,6/7,5/8,0
WM2000500	3,0/4,4/7,0 2,6/6,5/7,0



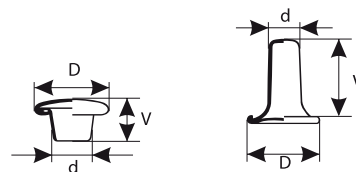
• Materiál / Material ▶ ocel / steel

STANDARDNÍ POVRCHOVÁ ÚPRAVA  
nikl, barevný lak

STANDARDNÍ BALENÍ  
MO karty: 10 ks  
20 ks  
sypané: 1000

STANDARD SURFACE FINISH  
nickel, colour lacquer

STANDARD PACKING  
retail cards: 10 pcs  
20 pcs  
loose: 1000



spodní díl • lower part

z a p í n á m e c e l ý s v ě t



## WM KALHOTOVÉ HÁKY DVOJDÍLNÉ • TROUSER HOOKS - TWO PARTS

Art.	Velikost/Size	A / B / D (mm)	Materiál / Material
			ocel / steel

**WM7050400**



**40222** 19,5/14,5/4,8

**STANDARDNÍ POVRCHOVÁ ÚPRAVA**  
nikl, černý oxid

**STANDARDNÍ BALENÍ**

MO karty: 3 ks  
sypané: 1 celek (144 ks)

**WM7050300**



**15255 1/2** 25/17,5/5

**STANDARD SURFACE FINISH**  
nickel, black oxid

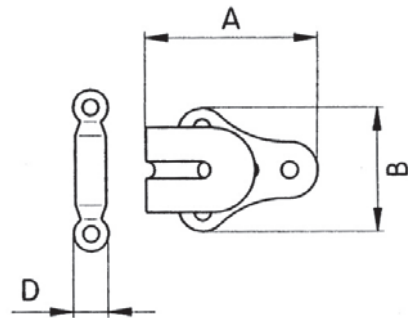
**STANDARD PACKING**

retail cards: 3 pcs  
loose: 1 gross (144 pcs)

**WM7050500**



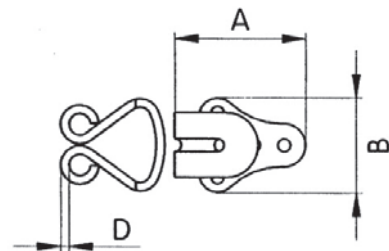
**40259** 25/20,5/5



**WM7050100**



**501** 25/17,5/Ø1,6



## WM KALHOTOVÉ HÁKY TROJDÍLNÉ • TROUSER HOOKS - THREE PARTS

Art.	Velikost/Size	A / B / D (mm)	Materiál / Material
			ocel / steel

**WM7055400**

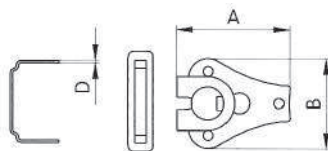


**40396** 20/15/0,5

**STANDARDNÍ POVRCHOVÁ ÚPRAVA**  
nikl, černý lak

**STANDARDNÍ BALENÍ**

MO karty: 2 ks  
sypané: 1 celek (144 ks)



**STANDARD SURFACE FINISH**  
nickel, black laquer

**STANDARD PACKING**

retail cards: 2 pcs  
loose: 1 gross (144 pcs)



**WM SUKŇOVÉ HÁKY · SKIRT HOOKS**

Art.	Velikost/Size	A / B / D (mm)	• Materiál / Material ▶ ocel / steel
------	---------------	----------------	--------------------------------------

WM7050800

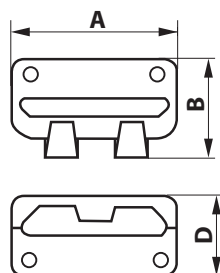


40607/18 21/12,3/10

WM7051000



40607/22 25/12,3/10



▶  
**STANDARDNÍ POVRCHOVÁ ÚPRAVA**  
nikl, černý oxid

**STANDARDNÍ BALENÍ**  
MO karty: 2 ks  
sypané: 1000 ks

▶  
**STANDARD SURFACE FINISH**  
nickel, black oxid

**STANDARD PACKING**  
retail cards: 2 pcs  
loose: 1000 pcs

**WM OVERALOVÉ ZÁVĚSY · OVERALLS BUCKLES**

Art.	Velikost/Size	A / B / D (mm)	• Materiál / Material ▶ ocel / steel
------	---------------	----------------	--------------------------------------

WM7003100



40 54/40/8,5

▶  
**STANDARDNÍ POVRCHOVÁ ÚPRAVA**  
nikl, staromosaz

**STANDARDNÍ BALENÍ**  
sypané: 100 ks

▶  
**STANDARD SURFACE FINISH**  
nickel, old brass

**STANDARD PACKING**  
loose: 100 pcs

